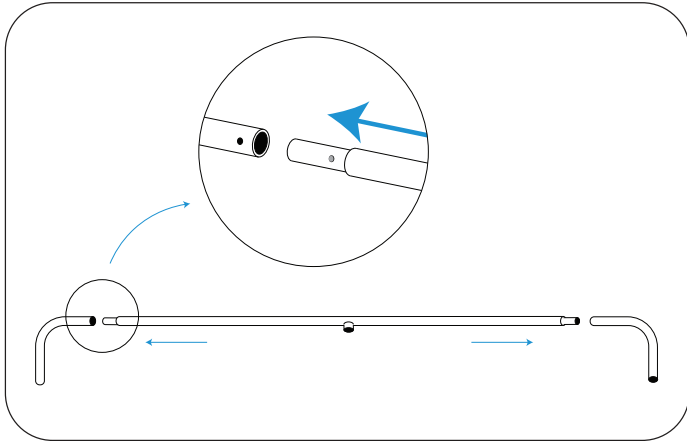
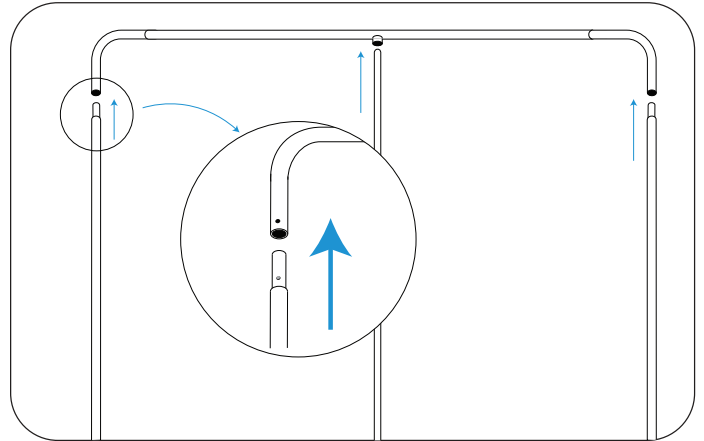


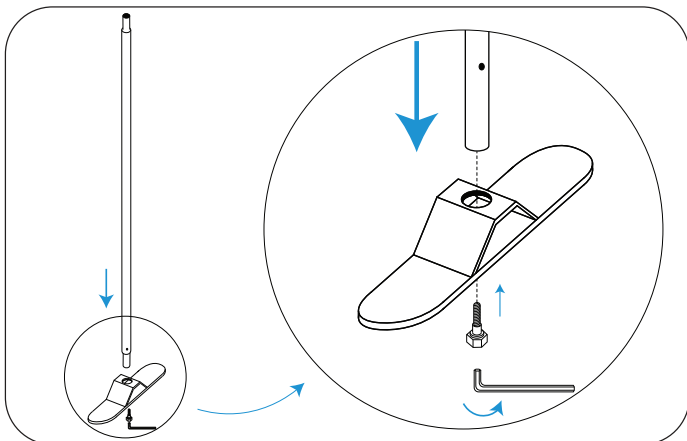
Tension Fabric Displays Installation Guide



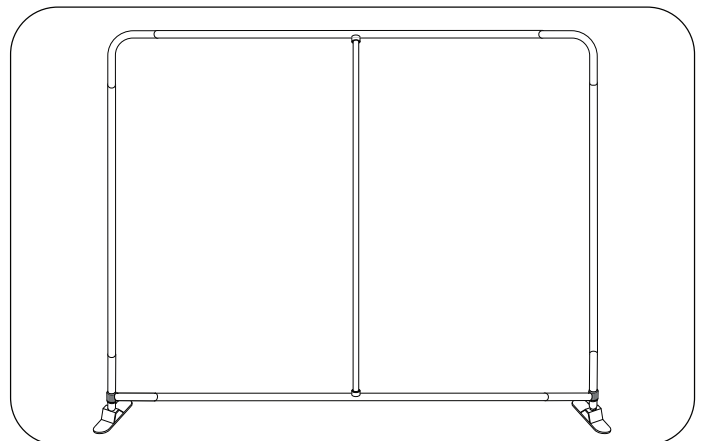
Step 1: Begin assembling the frame by connecting the top tubes.



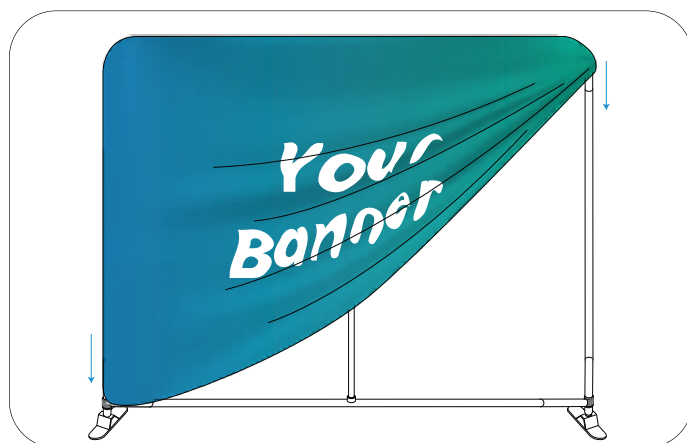
Step 2: Attach the vertical tubes to the top corners.



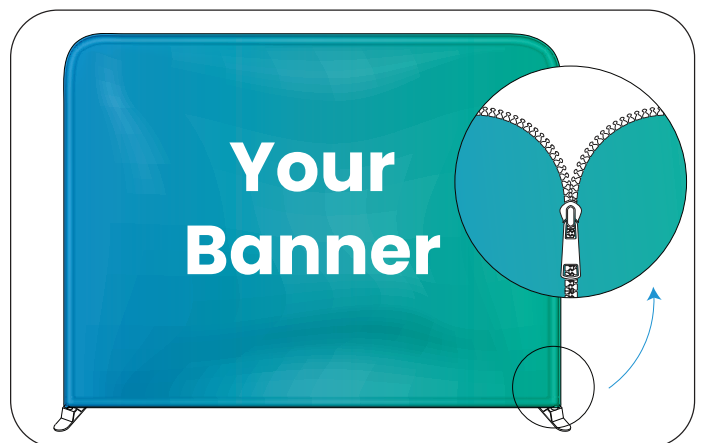
Step 3: Insert the bottom tube into the vertical poles.



Step 4: Fix the base stands to the frame.



Step 5: Cover the frame with the graphic starting from the left side and moving right.



Step 6: Zip up the graphic.