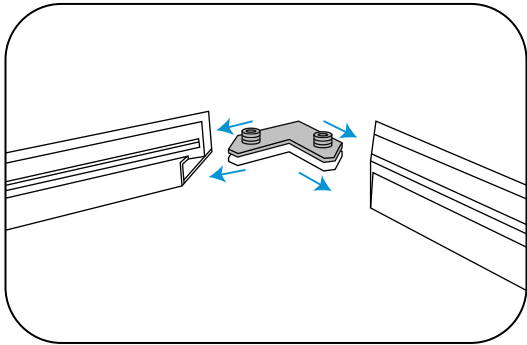
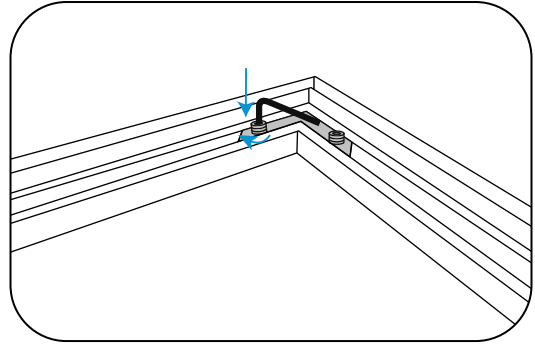


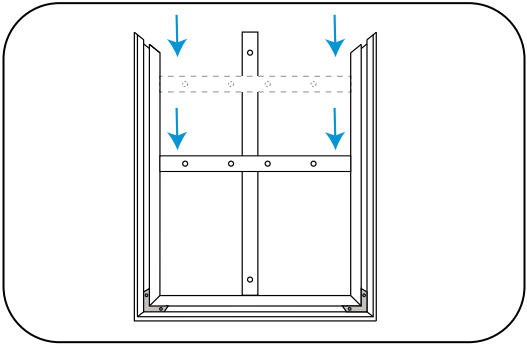
## SEG Wall Art



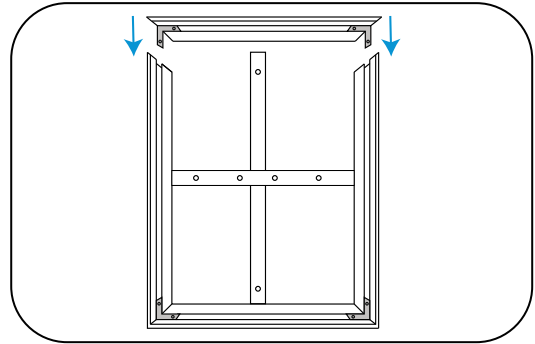
**Step 1:** Insert corner connectors into frame pieces.



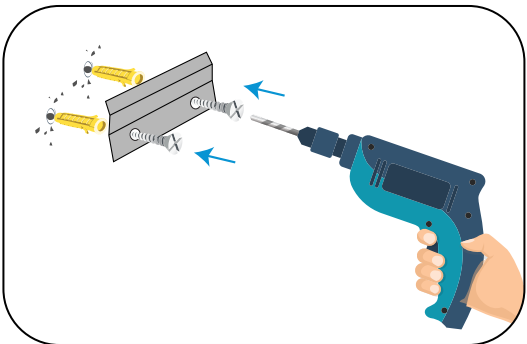
**Step 2:** Tighten the corner connectors with an Allen key.



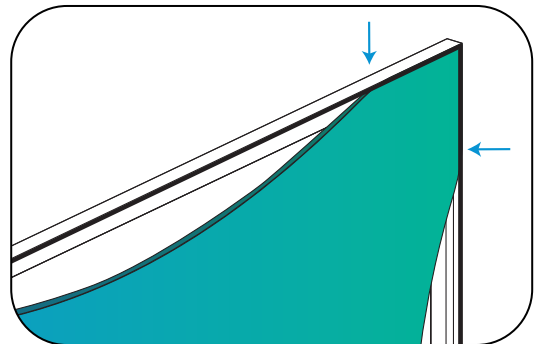
**Step 3:** Slide the support bars into the frame channels with the open side facing up.



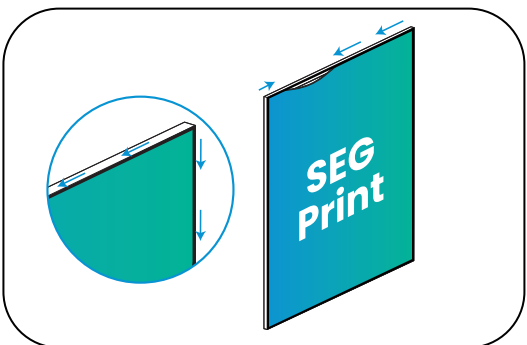
**Step 4:** Insert the remaining corner connectors and tighten with an Allen key.



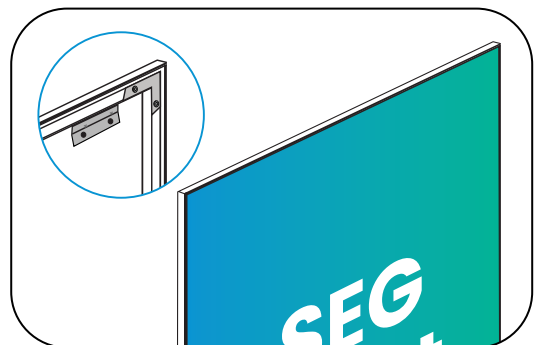
**Step 5:** Pre-drill holes into the wall and install the appropriate wall anchors.



**Step 6:** Lay the SEG graphic over the frame and press the edges into the channels.



**Step 7:** Start at the corners and work toward the center of each side.



**Step 8:** Securely mount your SEG frame onto the wall.