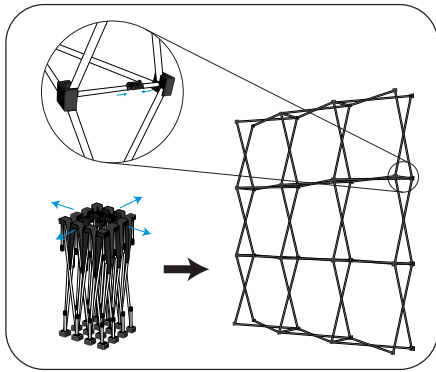
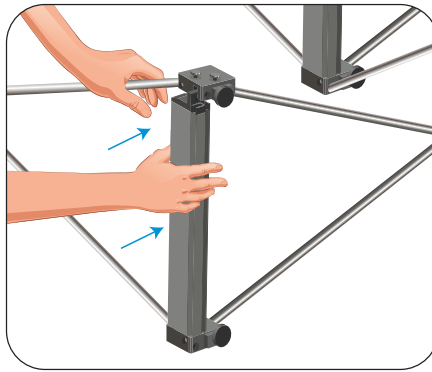


SEG Backlit Popup Displays Installation Guide

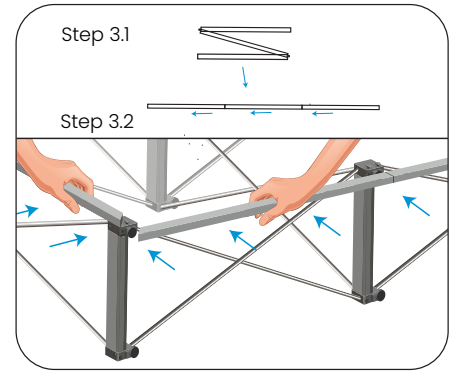


Step 1: Expand the display frame and lock the support arms.



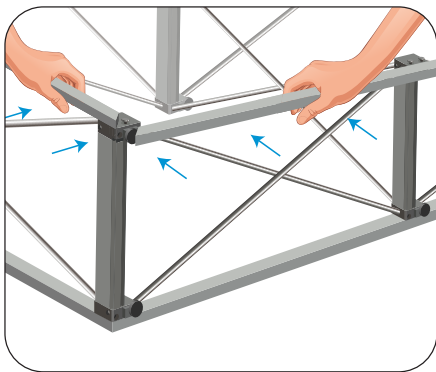
Step 2: Lay the structure down and install the corner supports.

** Ensure the gap on each bar faces the outside edge of the frame.*

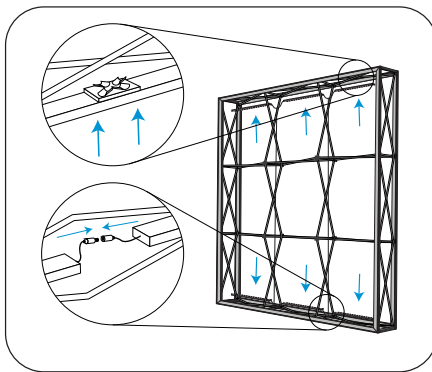


Step 3.1: Attach the channel bars to each other.

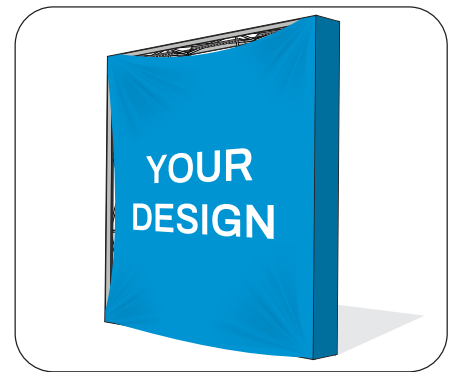
Step 3.2: Attach the channel bars to the edges of the frame.



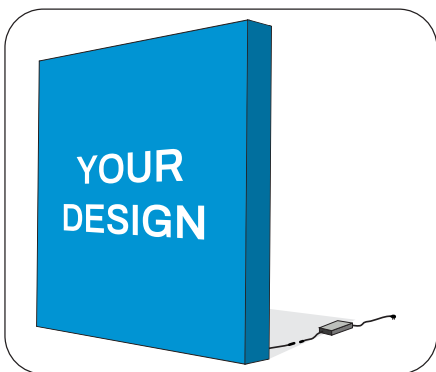
Step 4: Flip the frame over and install the remaining channel bars.



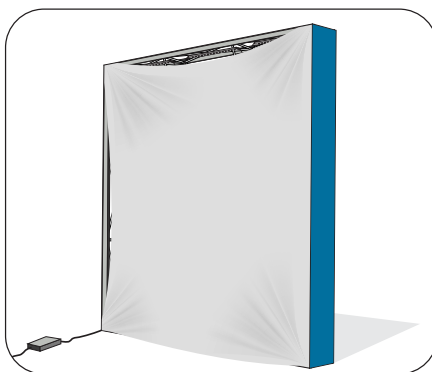
Step 5: Secure the LED light bars to the top and bottom of the frame and connect the wires.



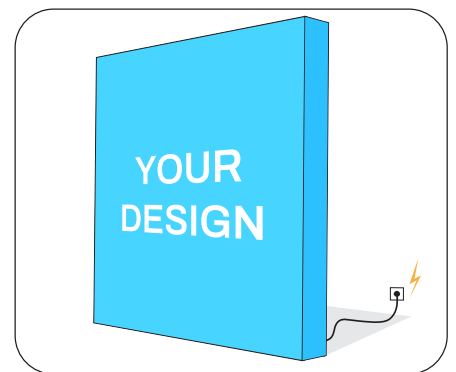
Step 6: Install the graphic by securing the corners and pressing the fabric edges into the channel bars.



Step 7: Install the light power supply.



Step 8: Install the blackout backer to the rear of the display.



Step 9: Switch on the lights.