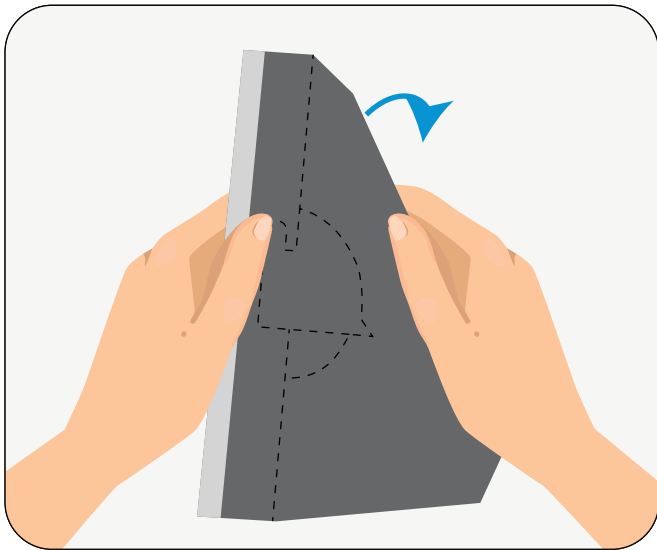
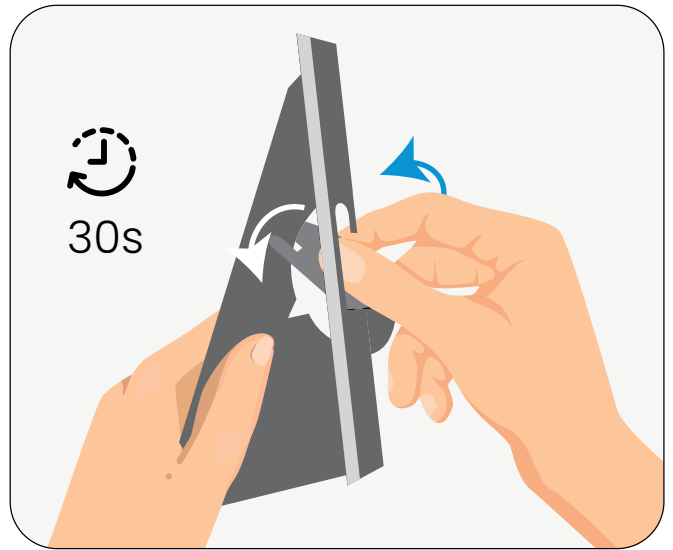


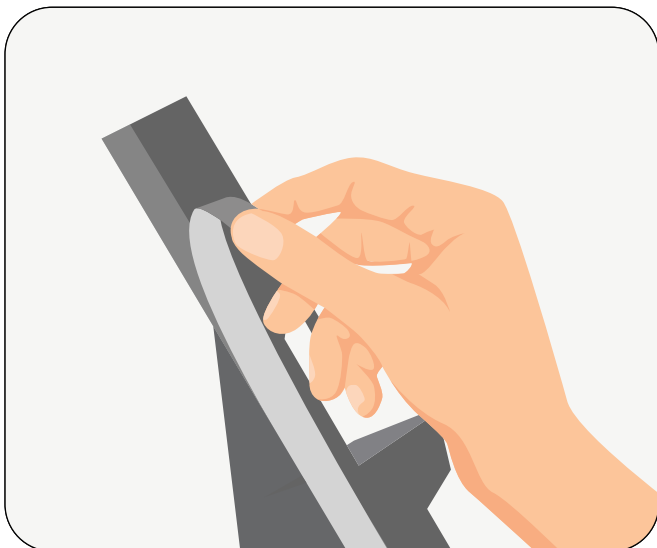
## Installation Guide for Easel Backs



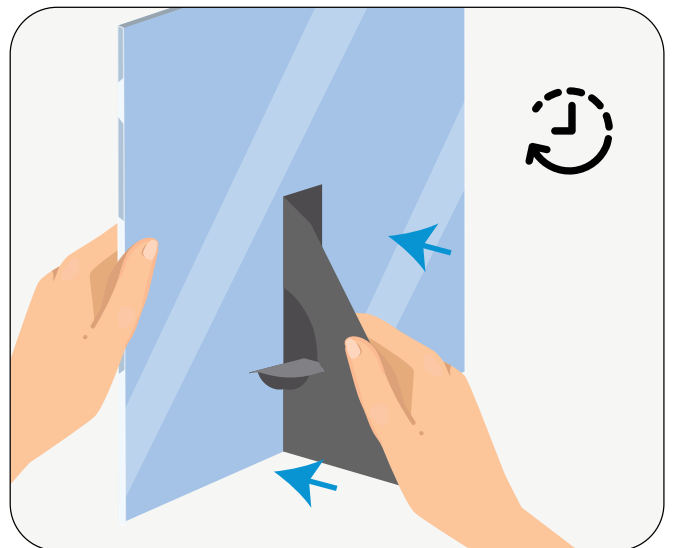
**Step 1:** Fold the wing of the easel back to open the pre-dotted area.



**Step 2:** Fold down the circular easel stabilizer to secure the wing in its slot.



**Step 3:** Remove the tape from the adhesive parts of the easel back.



**Step 4:** Fix the easel back to the back of your product. Press it for a few seconds to make sure it's firmly bound.