

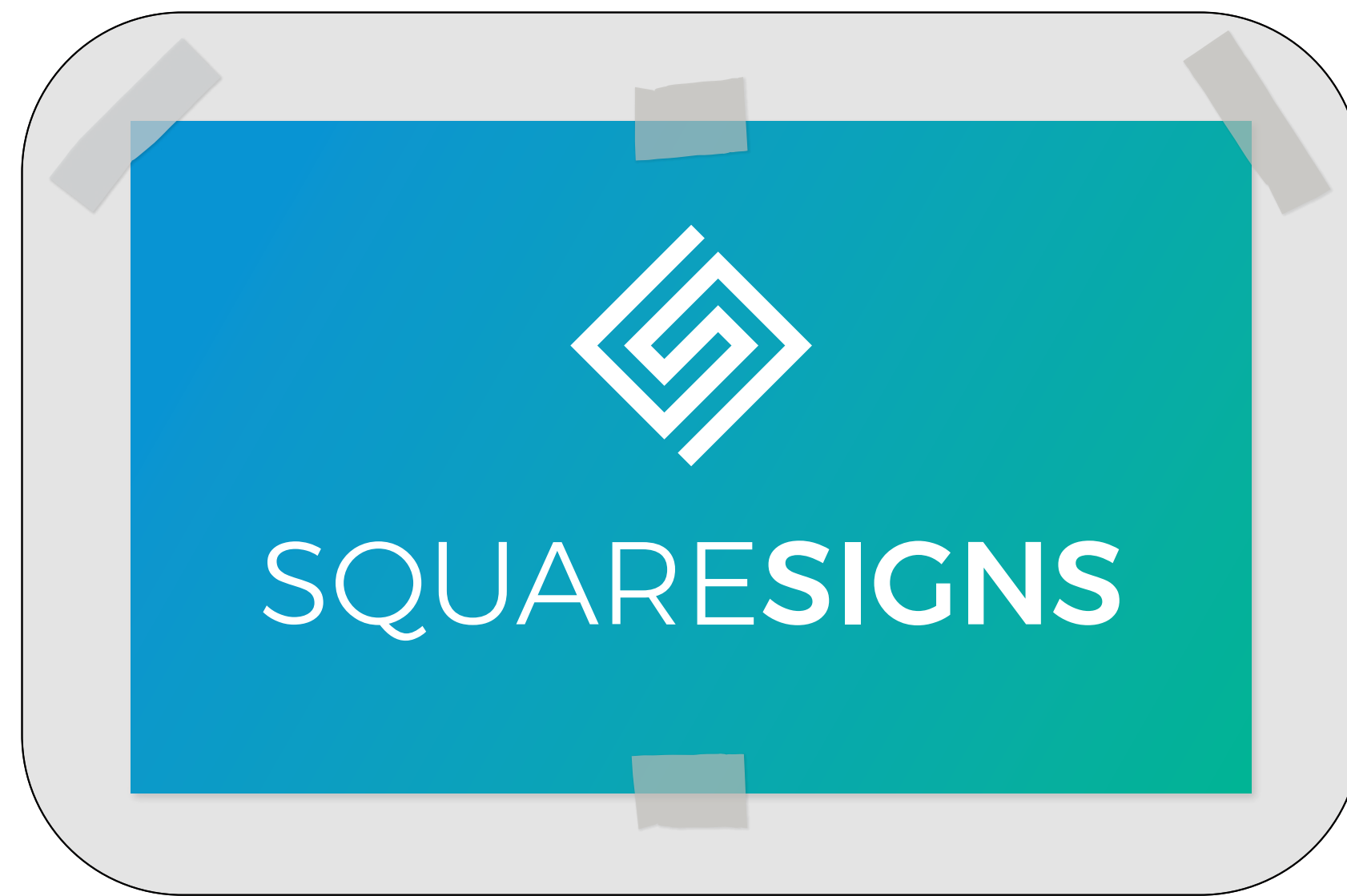
Installation by Dry Mounting



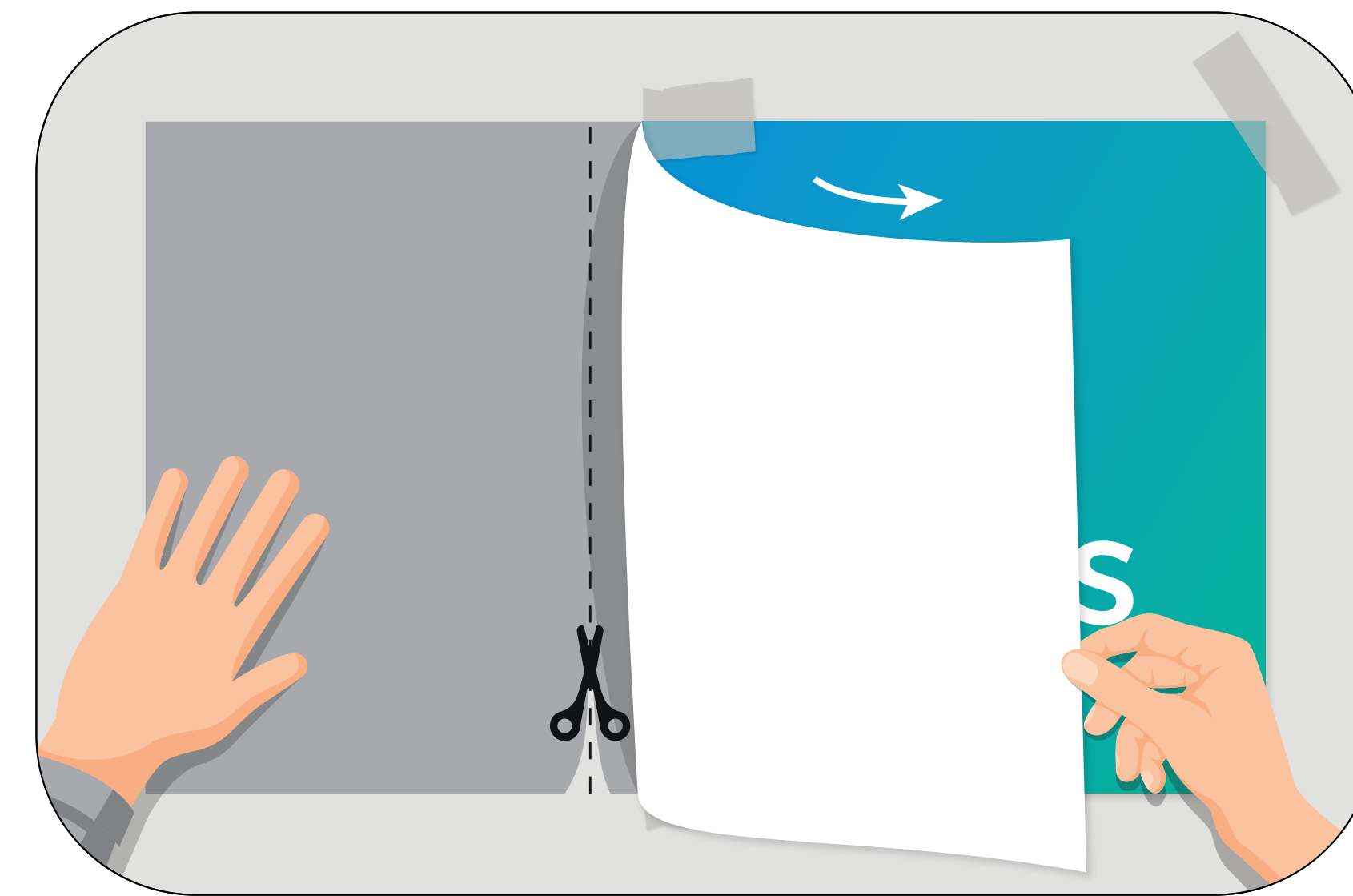
Step 1: Wipe the surface clean using a damp cloth.



Step 2: Adjust its position to ensure the decal is level.



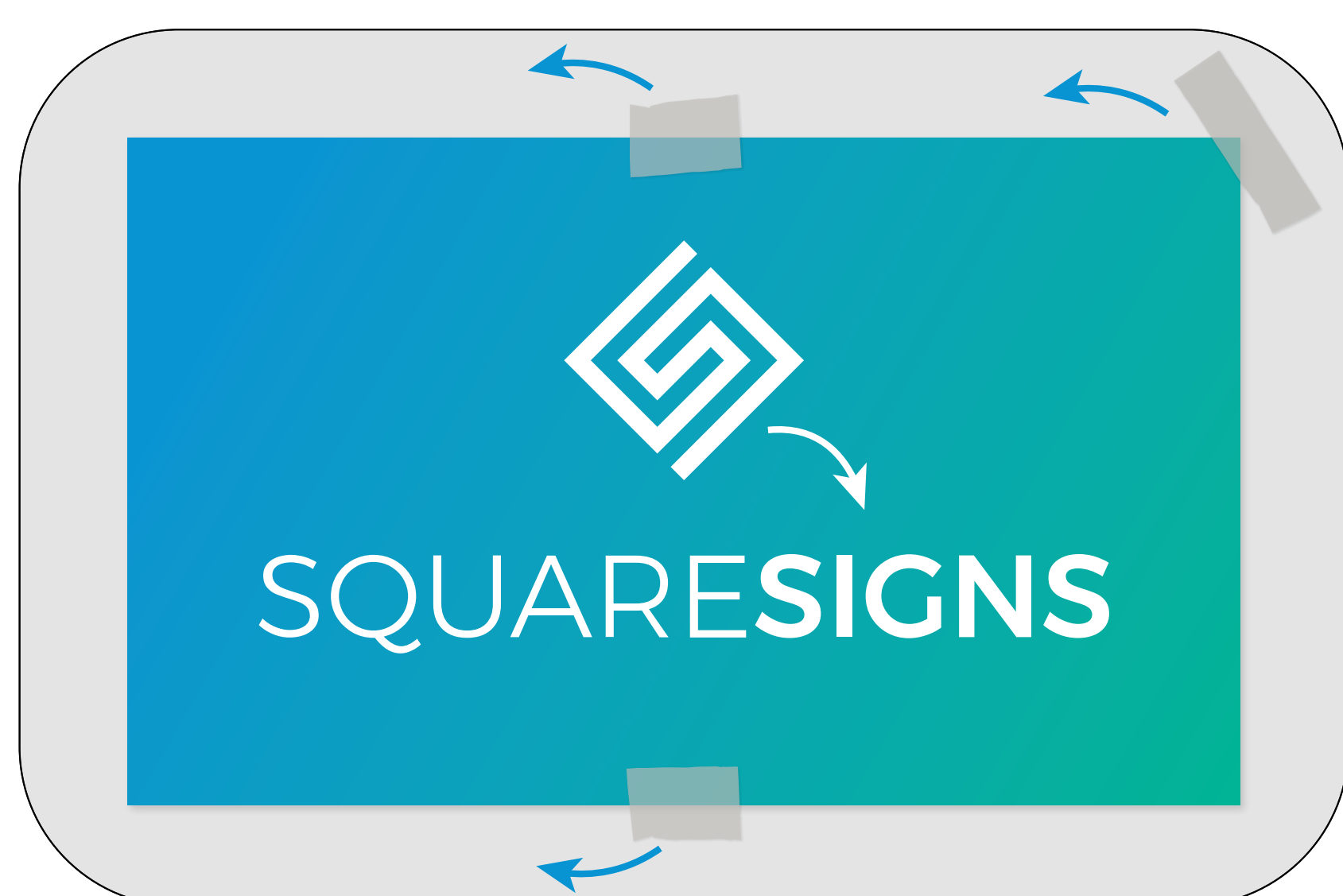
Step 3: Fix the decal with tape at the the top corners and top and bottom centers.



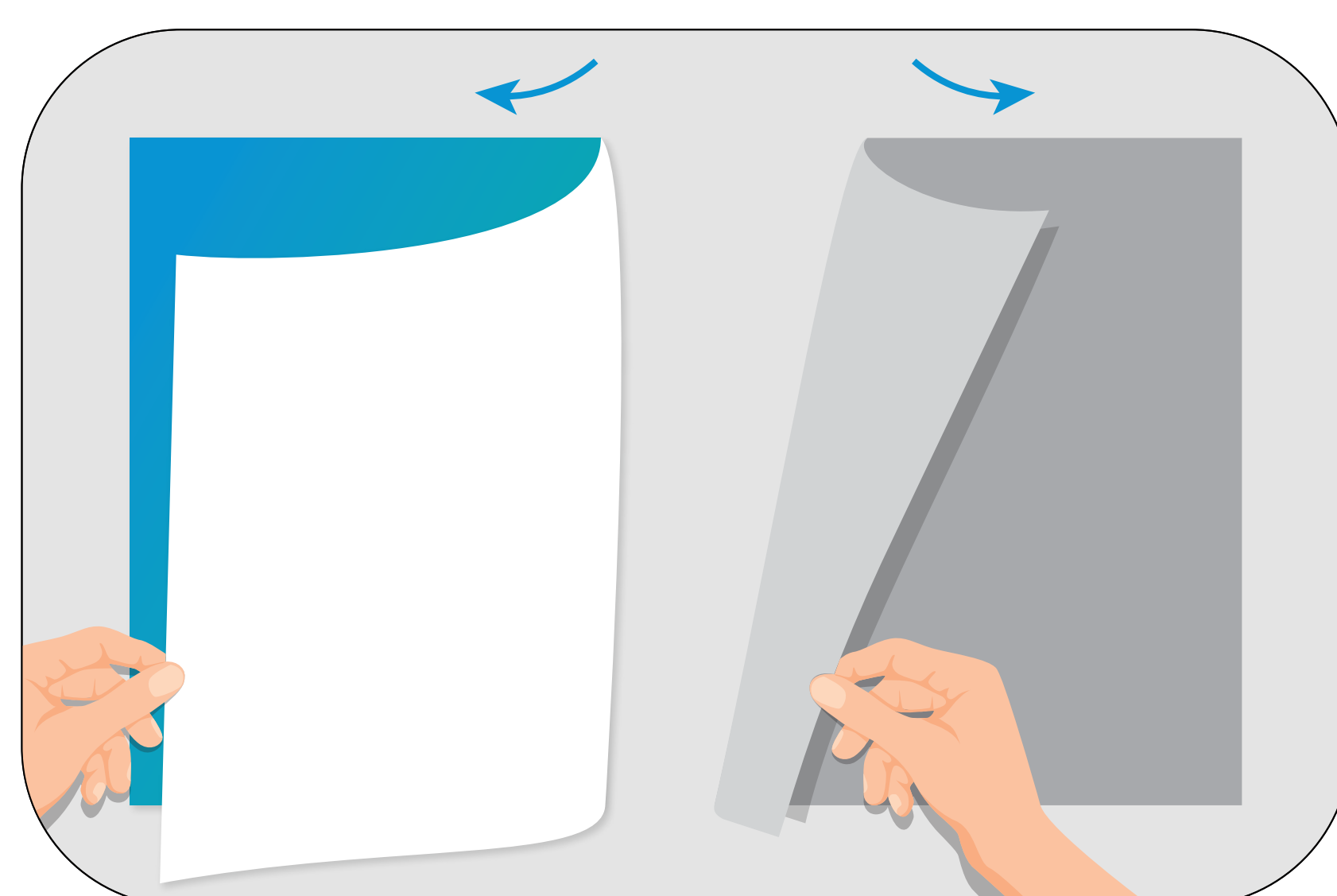
Step 4: Lift one side of the decal, then peel and cut off the backing paper.



Step 5: Press the decal onto the surface and smooth it with a squeegee.



Step 6: Remove all the pieces of tape.



Step 7: Lift the unbound side of the decal and peel off the backing paper.

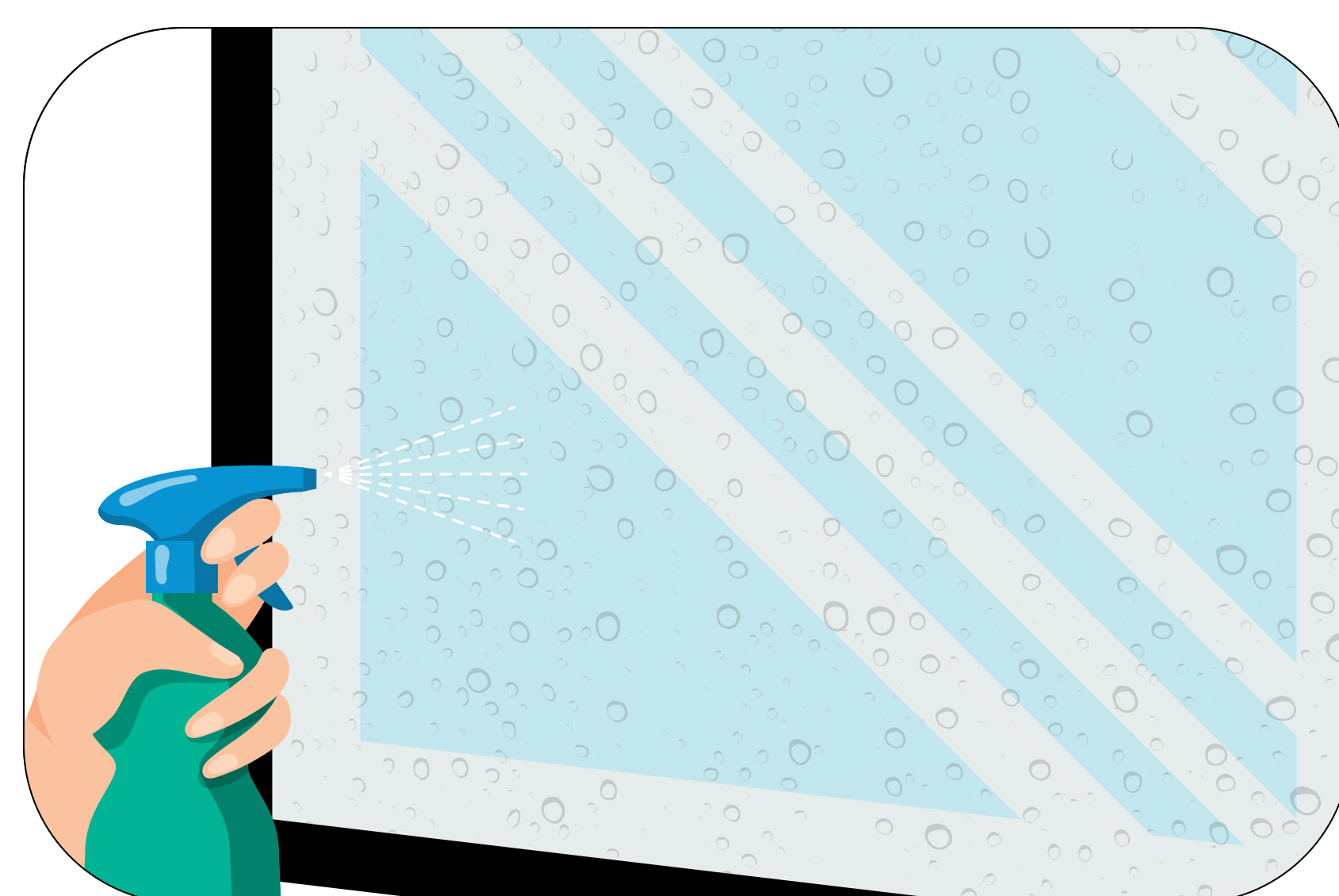


Step 8: Press the decal onto the surface and go over it with a squeegee.

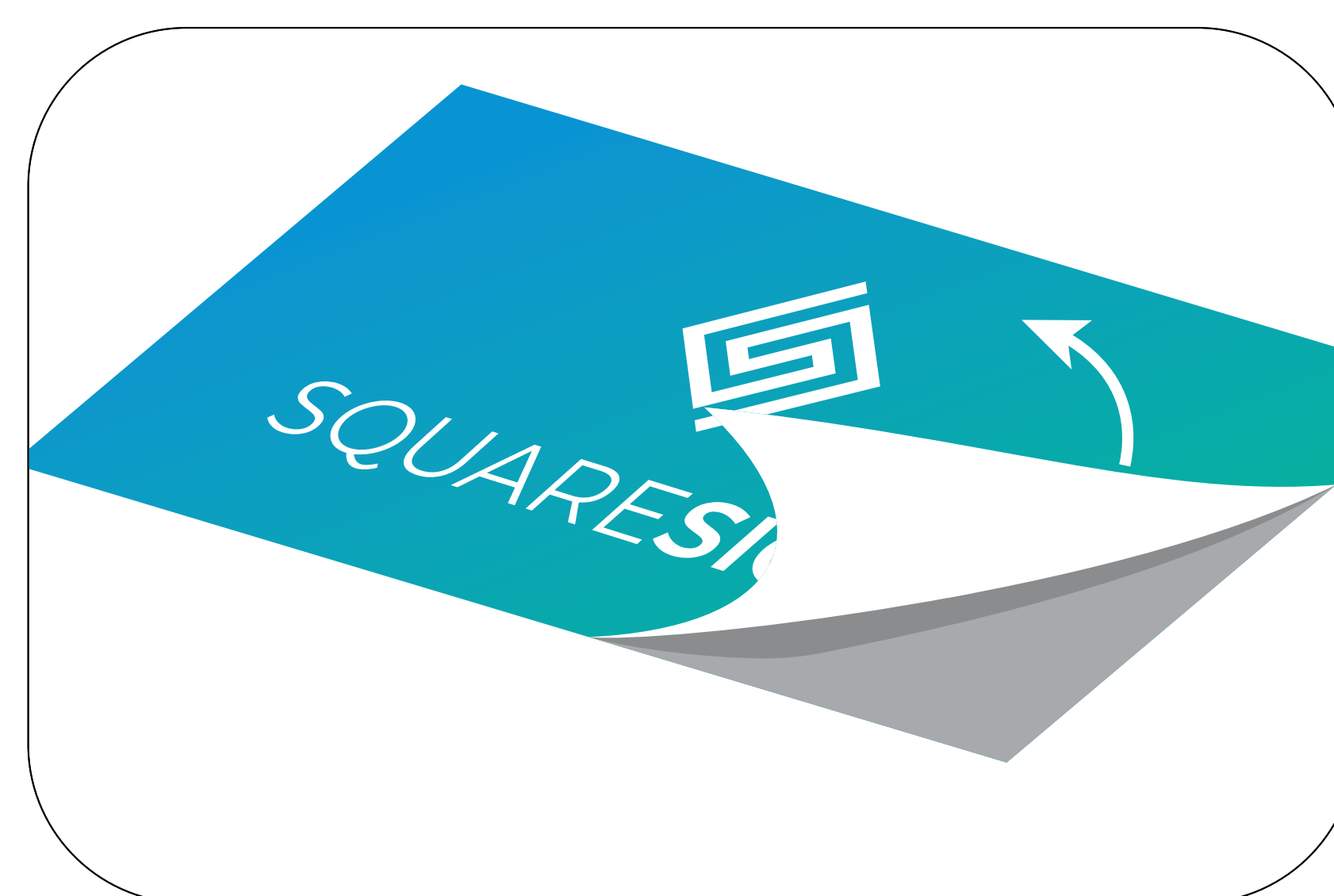
Installation by Wet Mounting



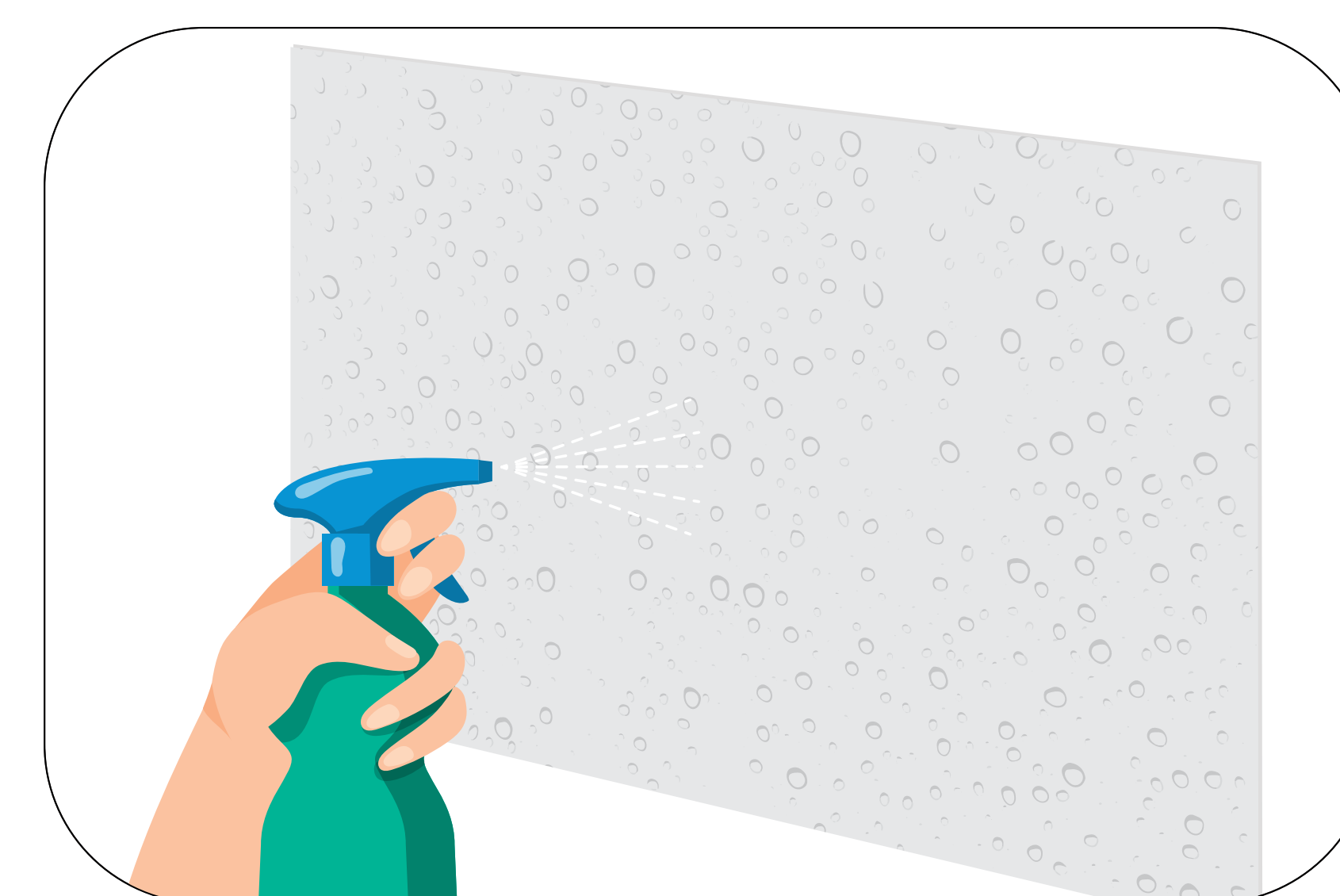
Step 1: Clean the surface with a damp cloth.



Step 2: Spray a 5/95 soap/water mixture onto the entire surface to make it wet.



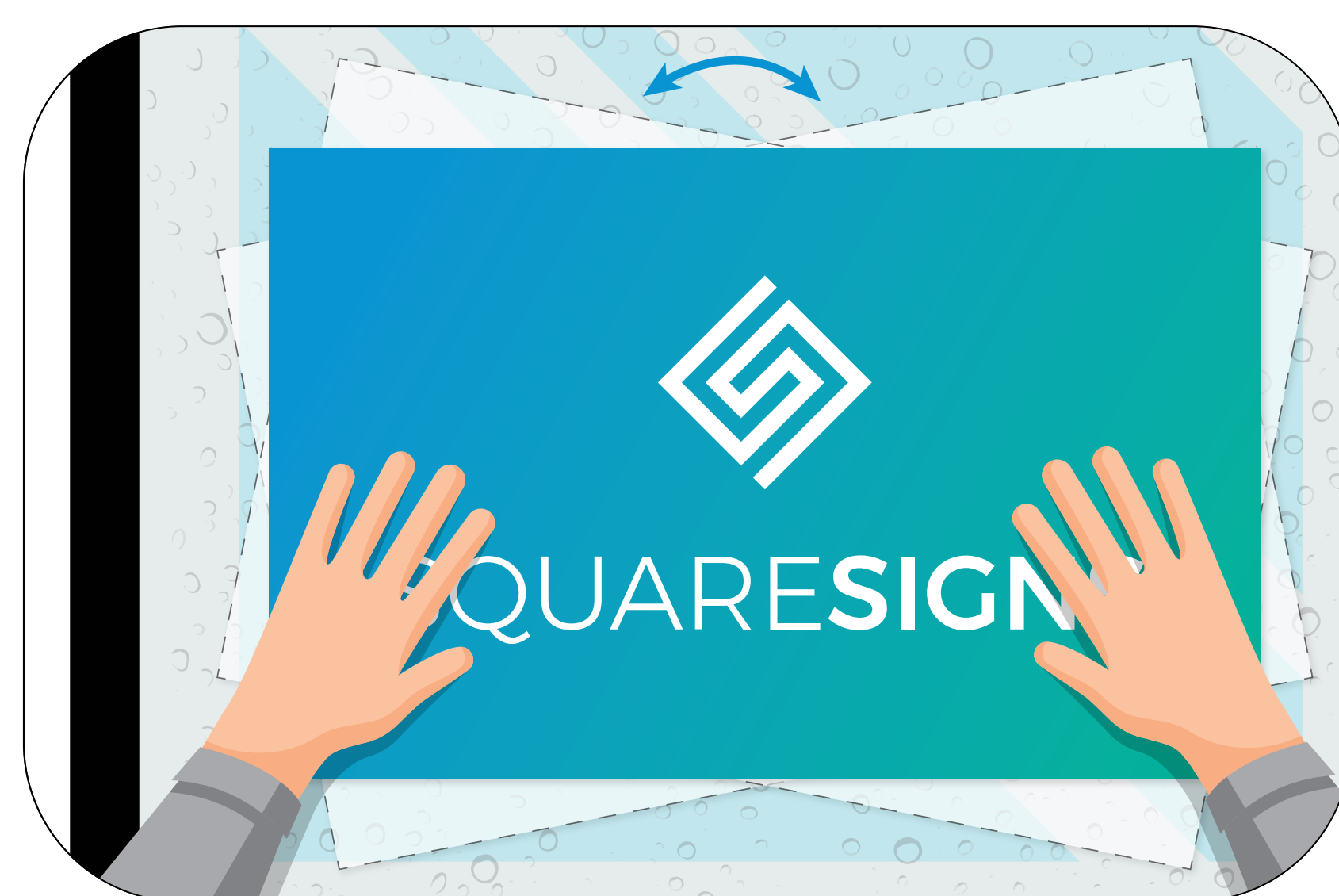
Step 3: Fully remove the backing paper from the decal.



Step 4: Spray the same soap-water mixture on the decal's adhesive back.



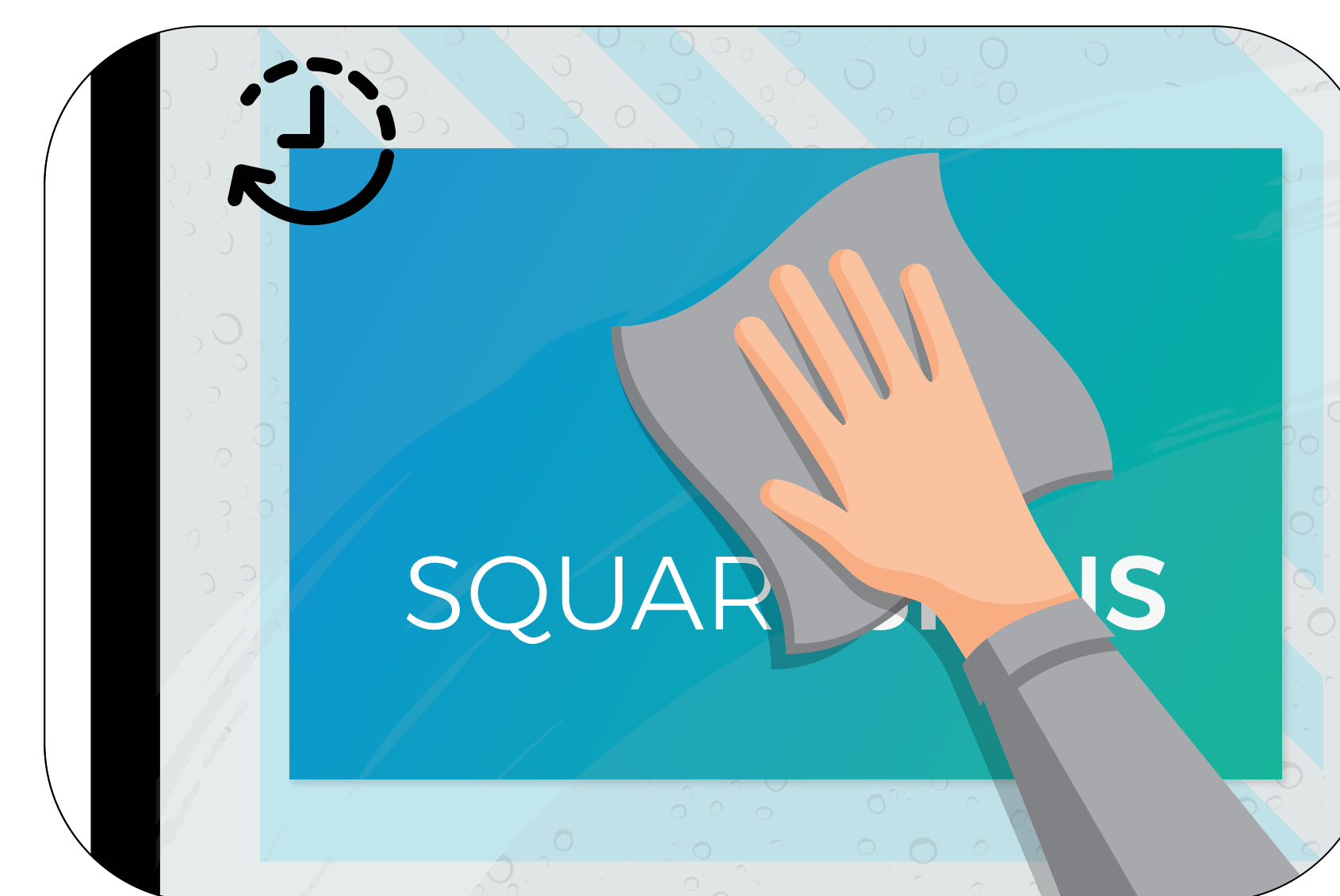
Step 5: Press the wet backing of the product against the surface.



Step 6: Adjust its position to ensure it's level.



Step 7: Use a squeegee to remove the water from underneath the decal.



Step 8: Allow the decal to bind to the surface then wipe dry.